

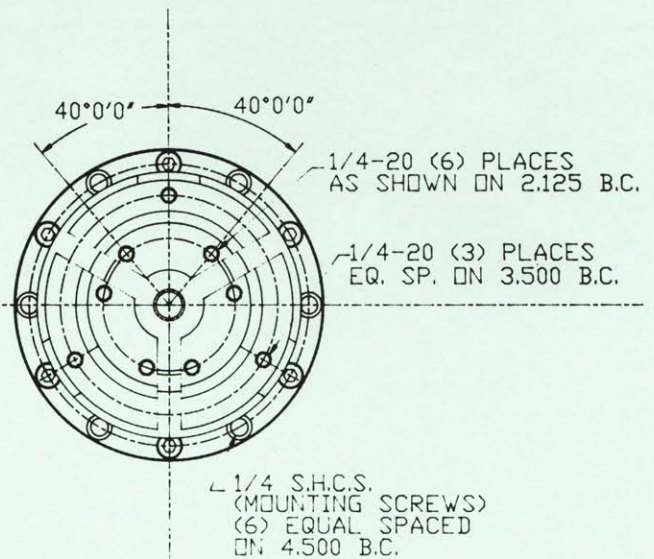
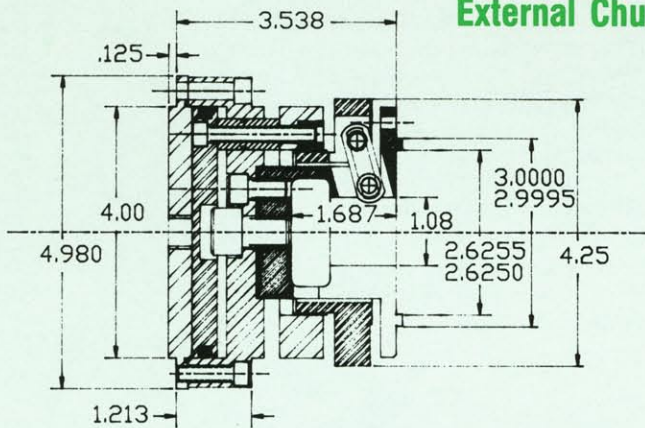
**Models:**

**31A**  
External Chucking

**41A**  
Internal and External  
Chucking

**HIGH QUALITY  
PRECISION  
CHUCKS**

**Model 31A  
External Chucking**



**Weight:** 12 lbs.

**Piston Effective Area:**  
O.D. 12.57 Square Inches

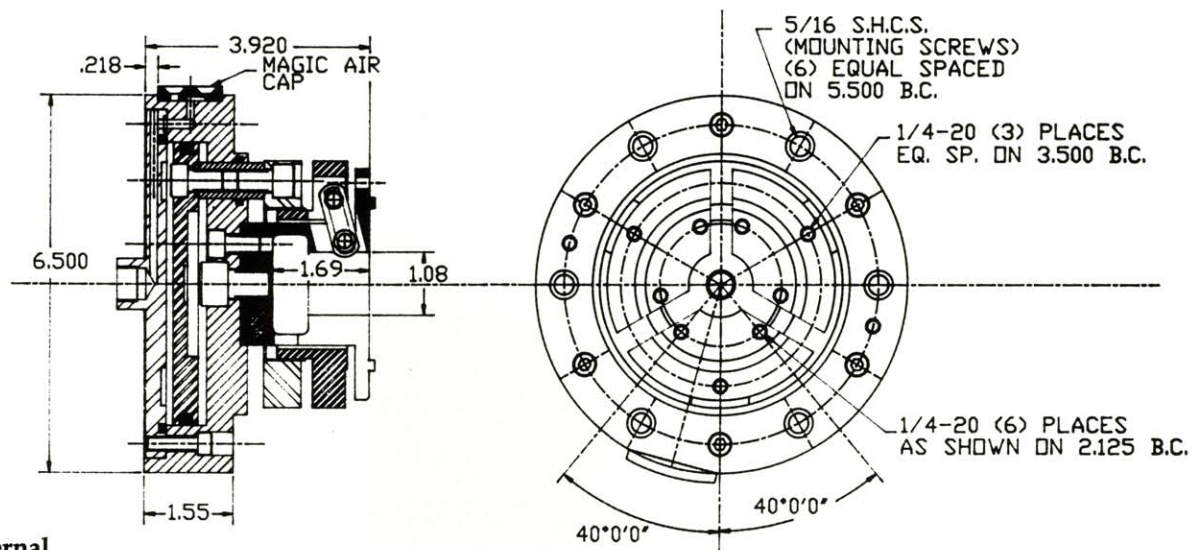
**Jaw Travel:**  
O.D. .035 Inches Max.

**Recommended Part Range With Standard Jaws:**  
O.D. .281" Min./5.50" Max.

*Specializing in  
Workholding Since 1946*

# 30 & 40 SERIES

*StaceAllen*  
CHUCKS



## Model 41A

### Internal and External

**Weight:** 15 lbs.

**Piston Effective Area:**

I.D. 17.80 Square Inches

O.D. 18.63 Square Inches

**Jaw Travel:**

I.D. .025 Inches Max.

O.D. .035 Inches Max.

**Recommended Part Range**

**With Standard Jaws:**

I.D. .625" Min./5.94" Max.

O.D. .281" Min./5.50" Max.

Capable of either internal or external gripping, remove the Magic Air Cap, rotate 180° and reinstall.

PART NO.	O.D. THICKNESS
401.....	4" x 1"
402.....	4" x 1 5/8"
403.....	4" x 2 1/4"
501.....	5" x 1"
502.....	5" x 1 5/8"
503.....	5" x 2 1/4"
601.....	6" x 1"
602.....	6" x 1 5/8"
603.....	6" x 2 1/4"
604.....	7" x 1"

4", 5", 6", 7" diameter jaws have a 9/32" hole in center. Pie shape soft jaws are standard for Stace-Allen Chucks and can be finished according to the "Jaw Finishing Instructions" sheet in the literature. Jaw roughing fixtures are available to mount the jaw blanks for machining of most of the stock prior to finishing on the chuck. Aluminum jaws may be quoted on request. If desired, finished chuck jaws can be furnished.

**For best accuracy and optimum grip force, chuck jaws must be finished on a Stace-Allen Chuck.**

*For Firm Proposal, Submit Part Prints, Tool Layout and Machine Mounting Information*

*Let Us Solve  
Your Chucking  
Problems*

**STACE-ALLEN CHUCKS, INC.**

2246-50 West Minnesota Street

Indianapolis, Indiana 46221

(317) 632-2401

Fax: (317) 637-7563